

# Chelsea Storm Sewer Opens Eastern Area Of East Kildonan For New Development

(Continued from page 1)

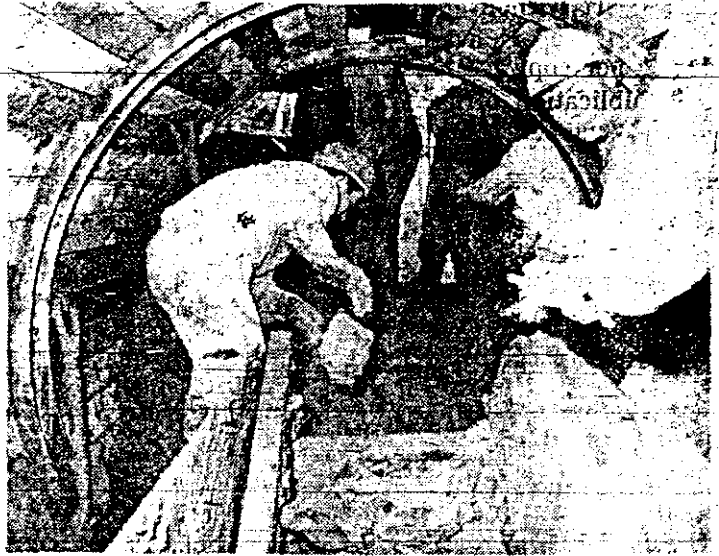
built under Watt and Golspie street in order to divert the storm water into the Chelsea avenue storm sewer from the existing built up area north of Chelsea, south of Leighton and east of Roch to the CPR tracks.

These structures contain flood gates to prevent any water backing into the Watt and Golspie street sewers.

Mine shafts were laid out approximately 1,100 feet apart all along Chelsea. There were shafts in the middle of each block on the north boulevard.

These were sunk to a depth of 25 to 30 feet, after which two crews of five men each were to mine east and west from the shaft.

In an eight-hour shift a crew of five men would mine 21 cubic yards of earth and pour eight cubic yards of concrete, thus completing eight feet of 90" diameter sewer.



LOADING CLAY ON MINE CAR

The walls of the sewer being 12" thick require a 114" circular hole to be mined before the concrete is poured.

All material excavated and concrete poured is moved to and from the face of the tunnel in mine cars on a narrow gauge track.

Clay mined in the tunnel is hoisted, in the mine car, up the shaft by a crane and loaded on a truck for disposal.

When the tunnel heading is approximately 150 feet from the shaft, an eight-inch hole is augered down to allow concrete to be poured from a concrete truck down the hole into a mine car. This saves pushing the mine car back and forth to the shaft.

A tunnel heading will advance up to 550 feet away from the shaft and a series of these auger holes saves a considerable amount of man hours.

Most of the tunneling was in a straight line, except for curves at Kildonan Drive, Henderson Highway, Golspie street and Gateway Road.

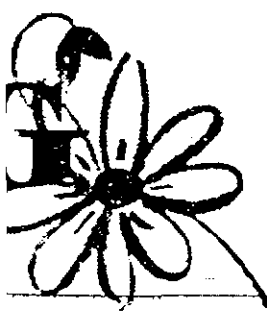
It was the responsibility of the City Survey Crew to insure the curves were accurate in order that a tunnel proceeding east and the other proceeding west would eventually meet.

The 90" storm sewer from the river to Watt, a total of 4,500 feet, was completed by the end of March in order to accommodate the spring runoff from the Watt st. system.

The remaining 2,600 feet of 84" sewer from Watt to Gateway will be completed about the end of May.

WASHINGTON — U.S. wheat sales to Saudia Arabia are projected to decline from a 65 per cent share of that country's flour imports in 1965 to about 50 per cent in 1970 and 1975.

The Saudia mostly import flour from the United States and wheat grain from Canada. But Saudi Arabia intends to increase its milling, and thus imports probably will switch from wheat flour to wheat grain.



## TIMER'S DUSES

assortment of timer Blouses. y in colorful veless, short sleeves.



to 46.  
7.95

**TAX RETURNS**

4.50  
up

**CROSSROADS SHOPPING CENTRE**

In the Mall next to Safeway

We Will Be Open on  
**SATURDAYS, APRIL 1-29**  
10.00 a.m. to 10.00 p.m.

Ph. 222-6207 or 589-1561