

Congratulations

To The
NEW CITY of EAST KILDONAN

VETERANS-NASH TAXI

Phone WH 2-6101 Phone WH 3-4533

Clean, Modern Cars To Serve You Anytime, Anywhere.

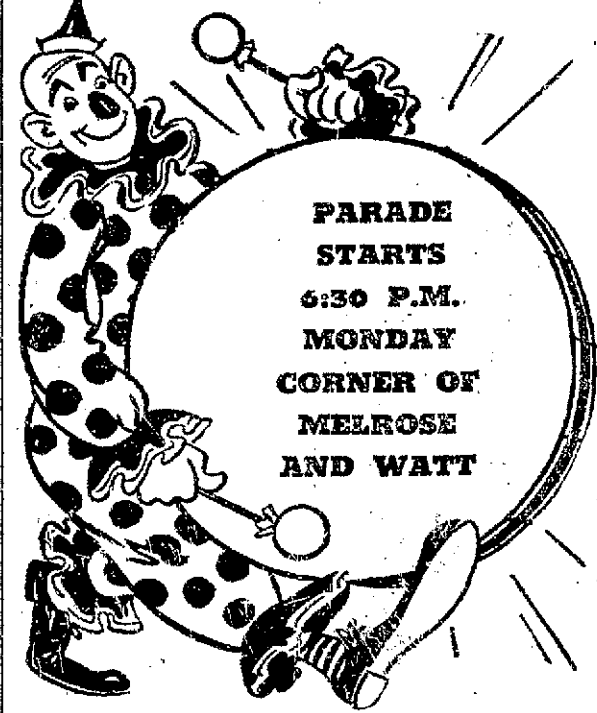
East Kildonan Grows In Land And People

East Kildonan has spread out a bit since its incorporation as a municipality in 1914. Population then was 3,520. That's a far cry from the number of people living there now — 20,100.

The area has widened considerably too. It's now 2,071 acres compared with 8,000 acres in 1914.

LEAGUE RANKING
New York — The 1936 Yankees won the American league flag by 19½ games which was the largest pennant edge in league records.

Rosser's SAY... STRIKE UP THE BAND!



PARADE STARTS 6:30 P.M. MONDAY CORNER OF MELROSE AND WATT

EAST KILDONAN IS NOW A CITY

'Congratulations'

Join In The Fun And Enjoy The Celebration

Rosser's BUILDING SUPPLIES

PHONE Justice 9-6308

THE SUPPLY AND SERVICE FOR USE OF ALL BUILDING MATERIALS

PHONE Justice 9-6308

176 SUTHERLAND AVE. (1 Block East of Main)



This modern shopping centre is located in the heart of East Kildonan

2-MILE PARADE ON CHARTER DAY

A two-mile-long parade is slated to usher in the birth of Manitoba's newest city Monday.

East Kildonan plans to celebrate the reception of its city charter with the most ambitious program of festivities ever attempted in the municipality's history.

At least 27 floats, four bands, 50 vehicles, a number of horses, the Winnipeg bomberettes and baton twirlers from the Bronx community club will participate in the hour and a half long procession.

Miss East Kildonan, to be chosen at a beauty contest in the afternoon, will be a special guest in the parade. She will be seen together with her two princesses, runners-up in the contest.

The music will be supplied by the City of Winnipeg police band, the RCAF Winnipeg band, The St. Boniface civic band and the RCE army band.

The parade is scheduled to get underway at 6:30 p.m. at the corner of Melrose avenue and Watt street. It will go south on Watt to Montrose avenue and then west to Henderson highway. When the parade reaches the highway it will continue north until it reaches its terminal point — the parking lot at 951 Henderson highway.

There the parade will end, and a new page in the history of East Kildonan will begin when Mayor George Suttie accepts the city charter on behalf of the municipality.

PENNANT MARGIN
Pittsburgh—The Pirates won the National league pennant in 1902 by a margin of 27½ games, the top ranking of all time.

Congratulations to the new CITY of EAST KILDONAN SNOWDON'S

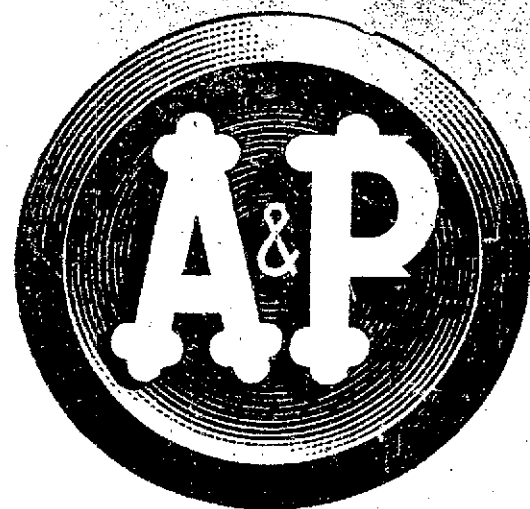
Serving East Kildonan and Winnipeg for 47 Years
261 Kelvin St. Phone LEBox 3-1164

Congratulations and Best Wishes

TO THE MAYOR COUNCIL and CITIZENS OF THE

CITY OF EAST KILDONAN

ALEX TURK M.L.A.



We are Proud to be Part of the New

City of East Kildonan

Congratulations and Best Wishes for

Future Success and Prosperity

Your East Kildonan A&P is located at...
951 HENDERSON HWY.
at Eldorado Ave.



OTHER A&P SUPERMARKETS LOCATED AT...

1110 Church Ave. at McPhillips St. 651 Stafford St. at Pembina Hwy. 891 St. Mary's Rd. at Frederick Ave.



Over The Garden Wall

Summer Pruning Of Your Shrubs

BY W. B. LESLIE
Landscape Consultant

SHRUBS are pruned to keep them in shapely form, healthy vigor by letting in sunlight and avoiding crowding, to encourage quantity and quality of bloom, stimulate strong new growth of ornamental twigs such as the oster dogwoods, to remove damaged and infected wood, and to renew youthfulness by having ancient parts replaced by young stems.

Let us consider summer pruning. Shearing is done periodically to clipped hedges and to those plants grown in globe or other formal outline. Spruce, pine, arborvitae or white cedar, juniper or red cedar, and fir hedges get but one clipping a year and that during the first week of July. They are trimmed closely to last year's wood so as to keep them within desired bounds. If cutting is deeper than that, permanent gaps or holes may result. Young evergreen hedges which are on the way to the size, ultimately wanted, have this year's shoots cut back about half their length to induce more side branching next spring. That makes for density.



Dr. Leslie

SPIREAS are of many types. There are more than 50 varieties being grown in Manitoba. Prune the following when spring bloom is over: Garland, Vanhoutte, Snow-white, Reeves, Germanider or flexuosa, Oriental or media, Pikow, Mongolian or gemmata, Korean or trichocarpa, Henry, and Threelobe. Thin out the bush by cutting out oldest stems at the crown. Vanhoutte is only semi-hardy here and it tends to winter better when most of its stouter branches are cut back one-half their length in early summer.

Other shrubs given their annual pruning when flowering is done are asaskatoon and other shadblows, flowering almond, chokeberry, broom, pearlbush, goldenbells, mockorange, lilac, ornamental currants, flowering quince and caragana.

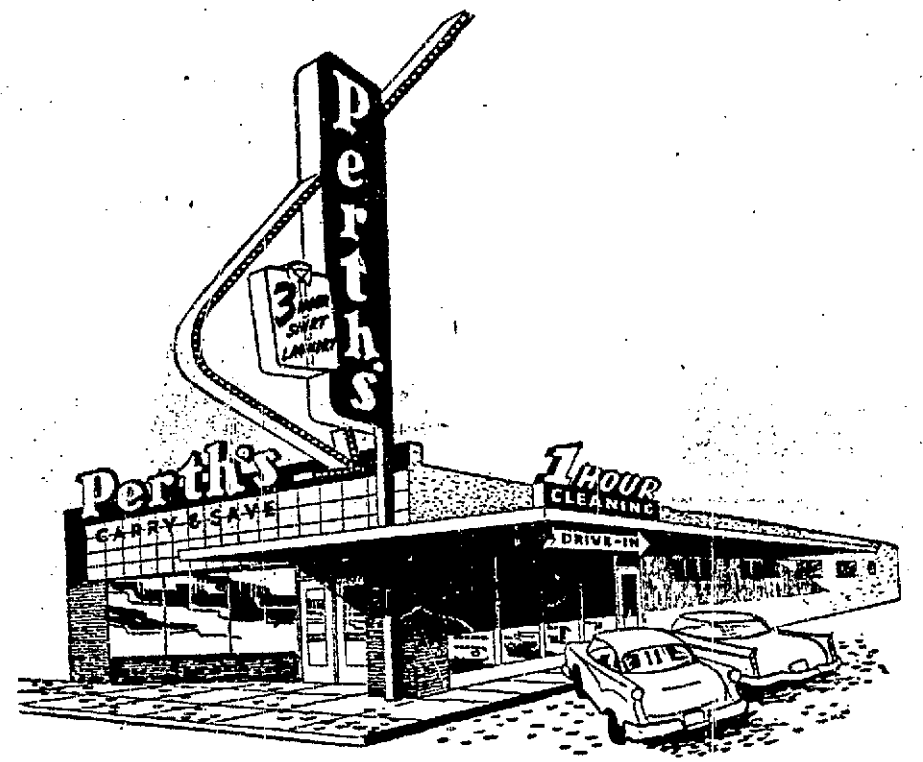
low rejuvenation by replacement in young shoots. They benefit from the greater amounts of sunshine and food that will come to them.

LILACS are often neglected or given unthoughtful care. The results are scant and small flowers. Consider a mature bush of French lilac on its own roots. It should have not more than six to nine stems. Any surplus beyond that should be eliminated. Now, cut out two to three of the oldest stems as near down to the crown as possible. Cut off all new sucker growths excepting the two or three needed to replace the old stems just removed. Select thrifty suckers in well placed positions. Lastly, snip off all flower spikes. If the bush seems low in vigor, apply fertilizer under the spread of the branches. Cultivate or wash it into the soil.

Tatarian HONEYSUCKLE may be treated similarly to the lilac but the hard old wood does not heal and recover so readily from drastic summer pruning. Early spring is preferred for removal of heavy old stems. Then the bush has the advantage of the flush of rampant spring growth. A little thinning out of branches is timely now.

Other subjects which can be thinned moderately after flowering are cotoneaster, dogwoods, elder, viburnum, snowberry and weigela.

Cut off all seed heads to conserve plant energy. Exceptions are those subjects made attractive through their ornamental fruits such as hawthorn, buffaloberry, honeysuckle, elderberry, shrub roses, and barberry. The reward for cutting off spent flower heads is shown by two flat-head, summer-flowering spires, Anthony Waterer and Froebel. The chore extends the season of flowering.



CONGRATULATIONS

to the

City of East Kildonan

Perth's — Western Canada's Largest Cleansing Institute — is proud to have made its own contribution to the growth and progress that have resulted in the incorporation of East Kildonan as a City!

The establishment of our Henderson Highway Drive-in Plant was in itself an expression of confidence in the future of Manitoba's fourth largest City. We can share in the satisfaction of other East Kildonan residents in this new recognition — we're prouder than ever of being full-fledged members of such an enterprising community!

1 HOUR CLEANING **3 HOUR SHIRT LAUNDRY**

Perth's

Henderson Highway Drive-In Plant
821 Henderson Highway—Corner Hazeldall

Open Daily from 7:30 a.m. to 9:00 p.m.