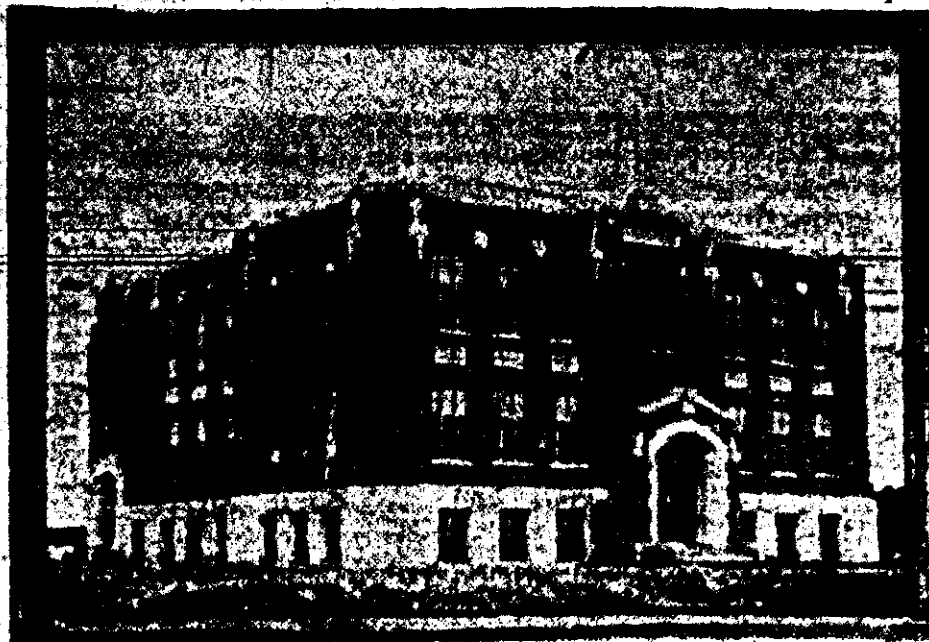
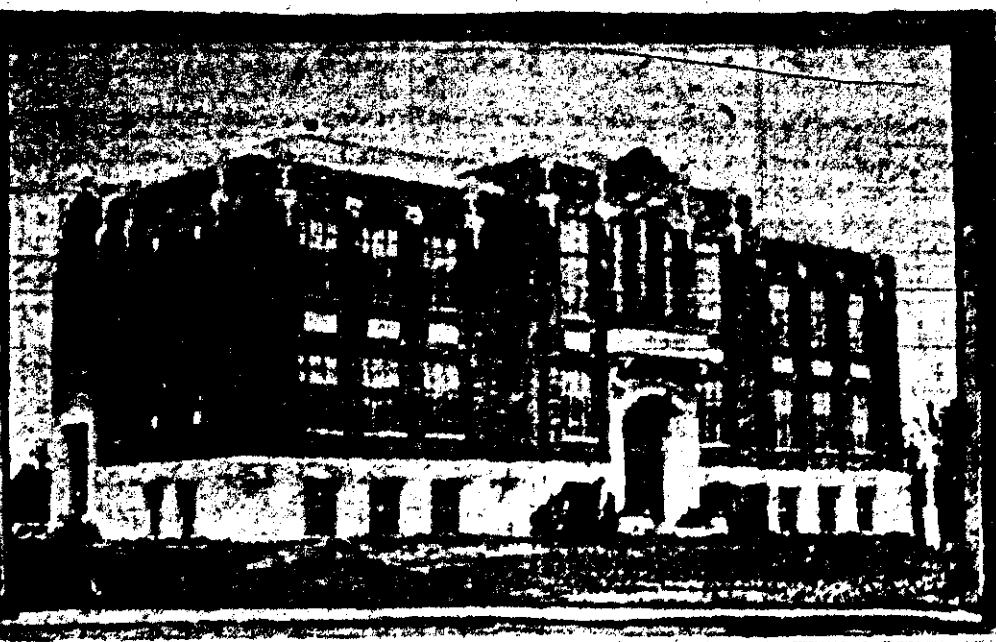


EAST KILDONAN BOASTS OF FINE SCHOOLS



LORD WOLSELEY SCHOOL



LORD KITCHENER SCHOOL

EAST KILDONAN in 1908 had two schools, a two-room place in what is now the municipal hall and Hamilton school, a rented house on Washington ave. There were then approximately 75 children attending both schools. Today, in the same municipality, there are ten public schools containing a total of 51 rooms, accommodating 1,650 pupils, and owing to foresight on part of the school board there is sufficient room to house all the children liable to attend school in East Kildonan for the next two years. By this time next year members of the board expect there will be more than 2,000 children at school.

Polson school at Munro st. and Winterton ave., was the first of the modern schools to be built. In 1910 it contained two rooms. In 1911 two

rooms were added. Four more added in 1913 and in 1918 a two-roomed annex was built making then a total of ten rooms. Rosewell school was built in the Bird's Hill district in 1915. It contained one room then and still has the single room.

Four additional schools were built in 1915. They were the five-roomed Lord Kitchener, the six-roomed Lord Wolseley, the one-roomed North Transcona school and Salisbury school No. 1, containing four rooms. This resulted in there being an addition of 15 rooms to the school space in 1915.

In 1920 Prince Edward school was erected. In the next year eight rooms were added to the original eight rooms thus creating a 16-roomed school within one year. In 1920 Salisbury school No 2 was built.

This addition created 10 rooms at Salisbury schools Nos. 1 and 2. In 1921 one-roomed Grassie school was built along with the one-roomed McIvor school. Both of these are in outlying districts.

There is also in the district a Roman Catholic school, St. Alphonsus, in which there are 100 pupils from East Kildonan only. This number is included in the school population. It is strictly a school for Catholics.

The principals of the schools are: Prince Edward, J. H. Meir, B.A.; Polson, D. S. Mitchell; Salisbury, Miss E. E. Wiley; Lord Wolseley, Miss B. M. Cameron; Lord Kitchener, Miss B. Jackson; Rosewell, Miss M. Andrews; McIvor, Miss E. Sylvia; North Transcona, James Barber, and Grassie school, Daniel Windsor.

Grades run as high as grade ten. Children attending grades beyond that receive schooling in Winnipeg where the municipality has arranged for their teaching at a rate of \$100 a year.

The school board expect within the next year to have a complete high school within the boundaries of the municipality. This school will be in Prince Edward school, on Trent ave.

The school trustees hold meetings regularly on the third Tuesday of each month. The board as it is constituted now contains the following personnel: H. C. Whelan, chairman; R. N. Lowery, vice-chairman; Mrs. E. L. McDougal, Mrs. M. Phillips, Hugh McNair, J. D. Young, John Coluter and R. J. Steele; John Colvin is secretary.

MODERN BRITAIN

of the "little dears" she had "sent to heaven". She died quite unwept.

EMPIRE'S WAR

and town after town was built on its site. Here the legions landed and

On
wn
Fr
sou
ing
off
gri
ng
PO
cle
for
Ta
his
far
nls