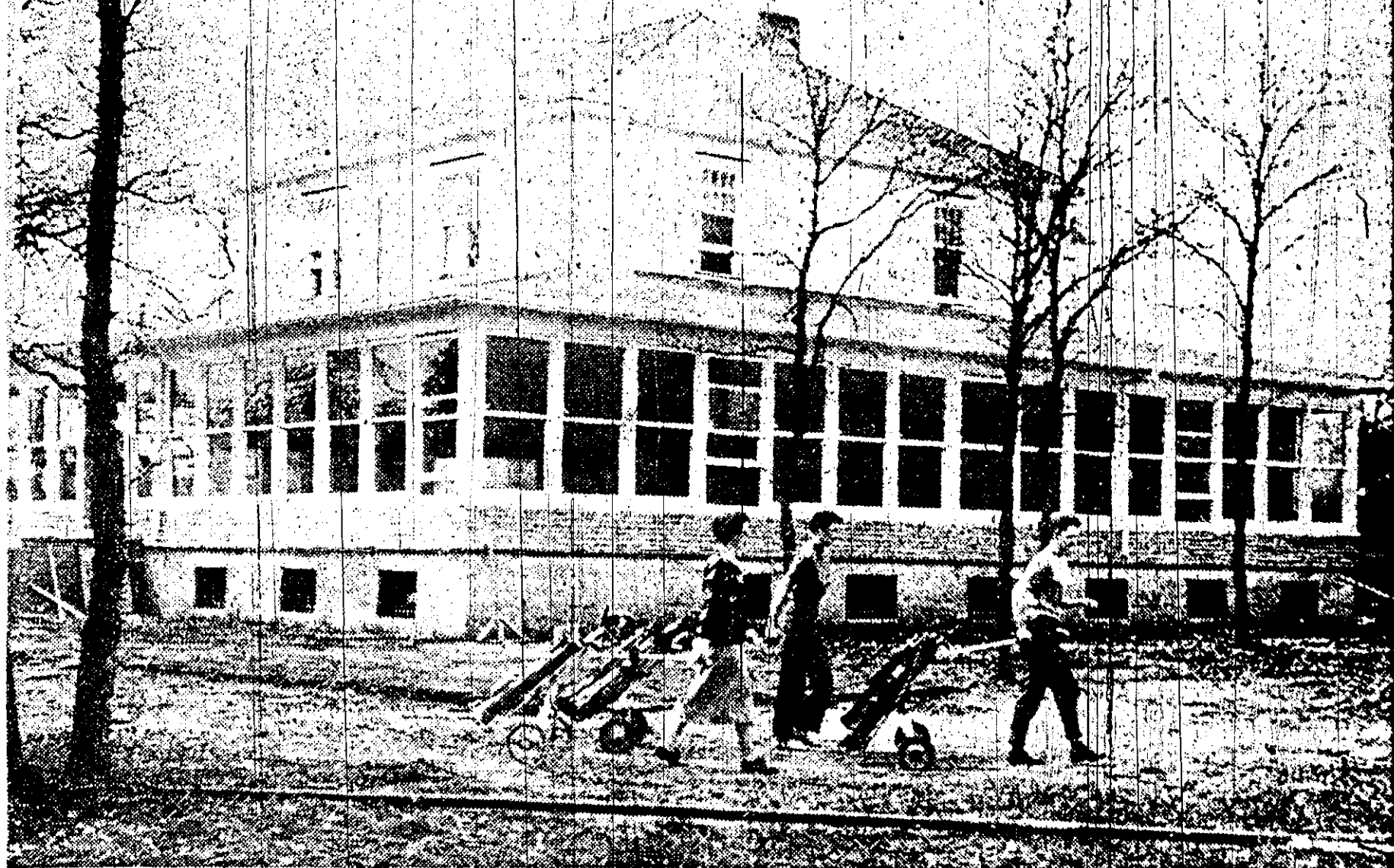


May 17 1957



**ROSSMERE'S NEW QUARTERS** — Three golfers are pictured here passing the front of the new clubhouse at the Rossmere Golf Club in East Kildonan. The new quarters, a house which has been renovated, features a large glassed-in verandah of new construction. Sixteen feet wide, the verandah portion covers the front and one side, 50 feet and 56

feet in length. The new bar is located in one corner of the new L-shaped section. Locker rooms are in the basement and living quarters for the staff will be upstairs. Official opening of the new clubhouse will be held Saturday afternoon, with a party for club members and their guests set for Saturday evening to celebrate the big occasion.