

# 32 More Classrooms For E.K. Students

The largest construction in East Kildonan at the present time is a \$800,000 job that will see one new school and two extensions ready for the fall term.

The School Board is confident that the schools will be completed by Aug. 15th, thus allowing them

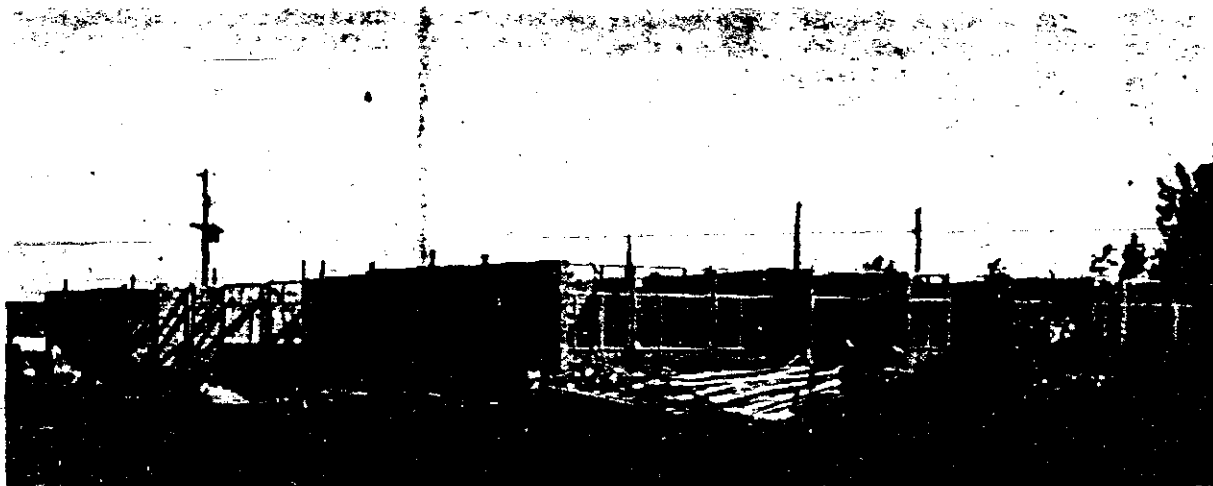
two weeks to furnish the rooms.

The new \$120,000 McLeod School will be an 8-room building which will take care of the elementary children in that new area.

The \$280,000 addition to Salisbury School is a 12-classroom building that will also include two home

economics rooms and two shops rooms, plus an auditorium. Morse Place Junior High School is a new name that has been suggested for this building.

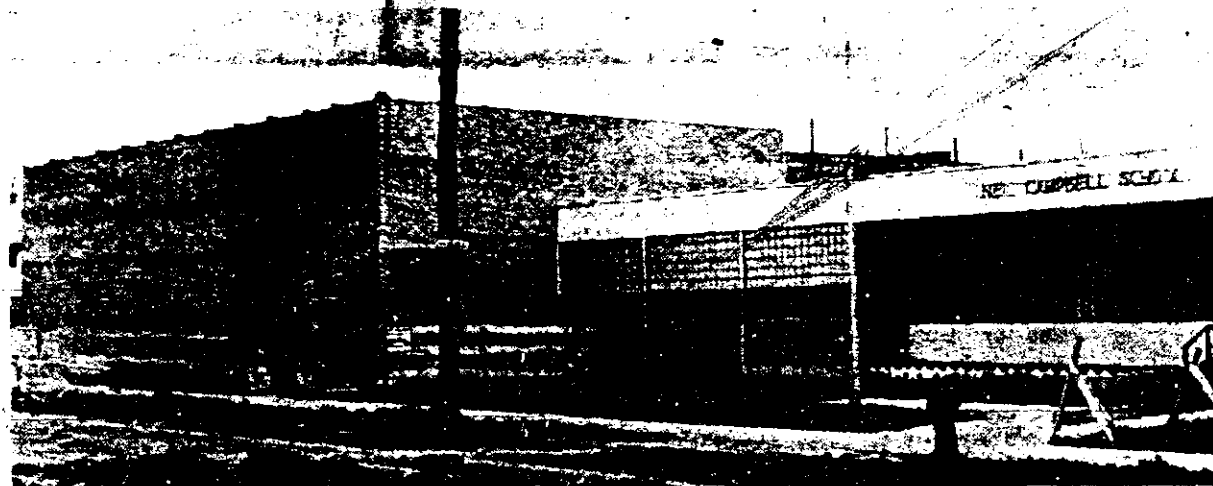
The \$195,000 addition to Neil Campbell School will also be a 12-room effort with auditorium.



McLEOD SCHOOL



MORSE PLACE JUNIOR HIGH SCHOOL (suggested name)



NEIL CAMPBELL SCHOOL

JUNE 18 1959

R  
R  
Fr

A  
or  
ceiv  
Eas  
Eas  
cil  
T  
the  
\$17  
but  
clud  
of  
TI  
gran  
foll  
Bror  
East  
Meh  
Mor  
Roc

It  
lette  
copy  
more  
to p  
mun  
befo  
Recr  
its n

Te  
Place  
activ  
very

No  
Place  
that  
adeq  
build  
at M  
overc  
incre  
club

Chi  
that  
monc  
all E

Lor  
and  
Aw

The  
Schoo  
schol  
closin  
Junio  
Schoo

A g  
age a  
was p  
by F  
the a  
Hor