

# CPR Uses 10,000 Sandbags, 100 Cars Of Gravel On Emerson Stretch

## Eight Inches Of Water Over Tracks In Places

Carloads of gravel, thousands of sandbags and other materials are being thrown into the struggle to maintain rail connection with Emerson — uninterrupted so far — Canadian Pacific railway officials said Saturday.

Ken Dunphy, engineer of the Portage division, and J. F. Fryer, superintendent of the division, reported that on one two mile stretch 100 carloads of gravel, 10,000 sandbags and 11,500 feet of breakwater made of double lines of bridge timbers had been used.

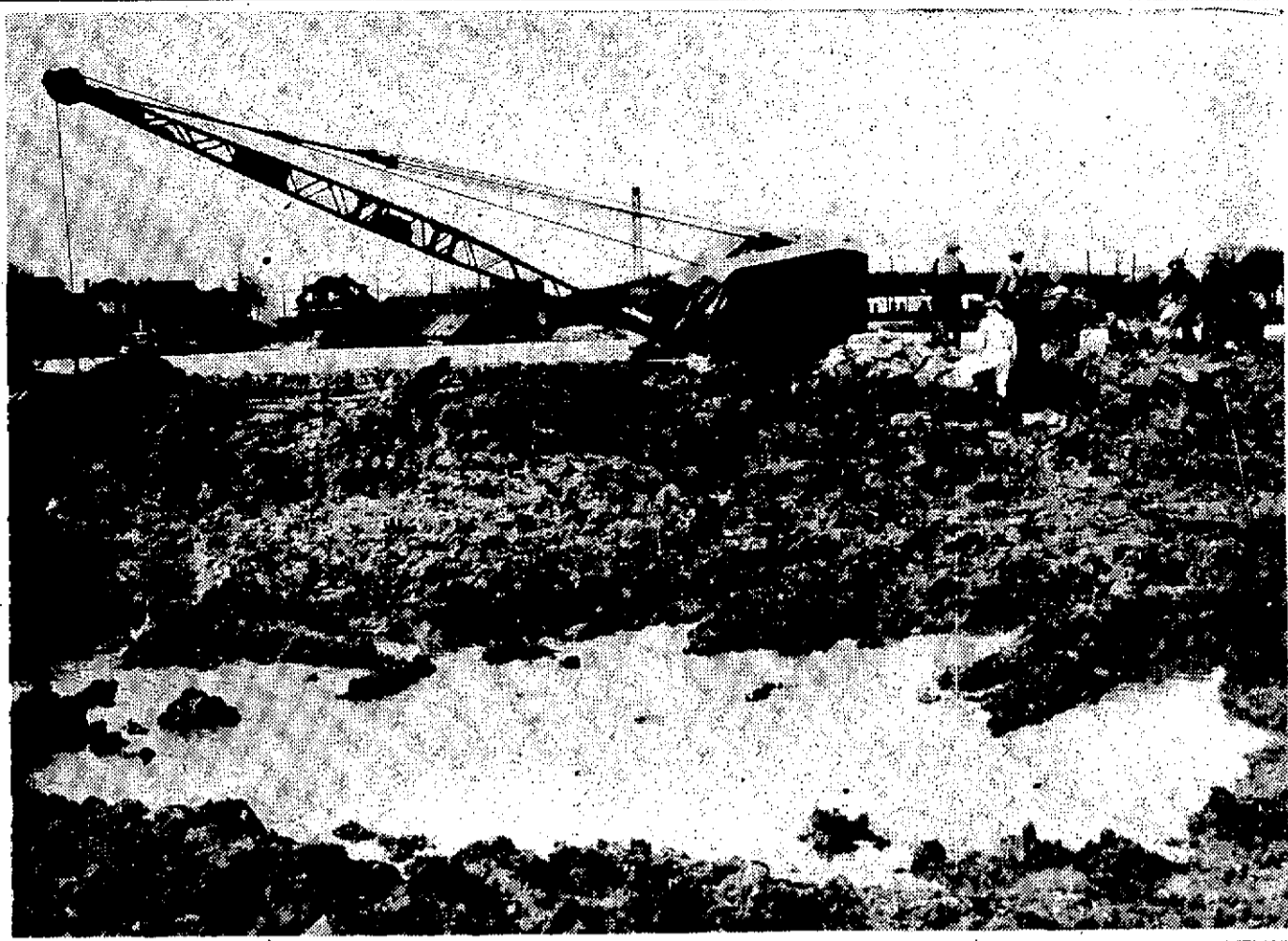
More than 3,400 feet of track were reported under water, and of this 2,100 feet were submerged to a depth of eight inches or more. Despite these conditions the track appeared

to be standing up well, the officials said.

No change in condition of Canadian National lines to the border has occurred, railway officials announced Sunday. Tracks remain closed to passenger traffic.

A relief special left Winnipeg for the Morris district early Sunday. As well as a supply car, it carried one coach equipped for living accommodation and 10 empty stock cars to evacuate cattle between Winnipeg and Morris.

A Canadian National railway train from Emerson managed to get four miles north of Lelellier Saturday, officials reported. The train carried empty cars for loading of household goods, and returned to Emerson the same day.



Even a large caterpillar crane has difficulty manoeuvring in the muck near Lyndale drive. Here machine operators and hand labor work to build up the dike, competing against time.

## Army Believes Bulwark Will Save Sanatorium

The half-mile of dikes protecting the St. Boniface sanatorium will hold, army officers on the scene said early Sunday morning.

Of the 265 patients, 180 have been evacuated in the past two days. Hospital authorities expressed the hope the remaining patients will not have to be moved.

About 150 army and civilian workers toiled throughout Saturday night building up weakened parts of the huge dikes.

Flood waters Sunday morning were four feet from the top. The Elm Park area from Dunkirk drive to the end of the peninsula is completely inundated. Those few families who have not been evacuated are living in attics.

Military personnel are patrolling the area in power boats to keep out possible looters and other undesirables.

The Seine river at the foot of Sadler avenue has backed up considerably. St. Vital police report, and several families have already been moved out.

Evacuation at the dangerous points along Victoria crescent is being pushed ahead by military personnel.

The army has requested that sightseers stay away from all flooded areas in the district. The army has also appealed for volunteers from service groups.

## City Registry Plans To Meet Housing Needs

A special city emergency housing registry has been set up at the following phone numbers: 849 281 or 849 232.

Workers will be on hand 24 hours daily to receive offers of accommodation or calls for help. William Courage, emergency housing director, declared Sunday.

The Central Volunteer Bureau is also keeping a staff on duty for room registration and is offering cars and drivers where needed. The phone numbers here are 934 934 or 934 262.

## Farmers Press For Assurance Of Financial Aid

Immediate assurance of financial assistance to flooded Manitoba farmers has been requested of Premier D. L. Campbell by the Farmers' Protective association, it was learned Friday.

A spokesman for the group, Harry Bartwell of Culross, said his group is calling on the premier to declare the floods "a state of national emergency."

"Immediate action is imperative and cannot be delayed until the extent of the damage is known," he said. Farmers must be assured necessary supplies of feed, seed, equipment and animals will be available for immediate use when the floods recede, he added.

"Flood conditions," Mr. Bartwell said, "in Manitoba from Winnipeg to Emerson and 20 to 40 miles in width, covering the most fertile land in this province, are certainly as serious, if not more so, than the British Columbia situation of last year."

"Delay in this action will cause postponement of remedial action and farmers in flooded areas will be unable to go about their farming operations when the emergency has passed," he concluded.

## Airmen Get Shelter Aid Ready For 500

Preparations to accommodate 500 evacuees are now under way at Stevenson field, it was reported Saturday by Ptl. Lieut. E. G. Smith. "We have 60 men on flood duty on a 24-hour basis in West Kildonan," stated the air force official.

The West Kildonan flood relief crews are under supervision of D. Baxter, municipal engineer.

Air Force crews were working in the Wildwood district, but were withdrawn when the dike broke.

About 80 men from the 402 Reserve squadron were available at 1 p.m. Saturday. A half-hour flood broadcast was to be made at noon, over the CBC.

## De Gaulle Sees Party Taking French Helm

GRENOBLE, France, May 7 (BUP)—Gen. Charles de Gaulle sees the day coming when he will again be France's chief of state. At a meeting of his cheering followers here, Sunday, de Gaulle predicted an early collapse of the present government. When the regime falls, he said, his party will take the helm.

## St. Boniface Dikes Hold Firm; 1,500 Men Fight River Battle

St. Boniface's three miles of dikes protecting hundreds of homes from inundation and thousands of citizens from evacuation, were holding firm Sunday morning.

The army took over the battle against the Red St. Boniface city officials have known more than \$1,000,000 worth of equipment, with the aid of 1,500 men.

As a result the city still had hopes Sunday of emerging victorious and relatively free of water.

The army took over command of St. Boniface dike building operations at 3 a.m. Sunday. In charge was Capt. John Rayson, R.C.A.S.C. Four other officers and 60 men were working in co-operation with civilian authorities and volunteer flood-fighters.

Army officials said at 10 a.m. Sunday the worst spots in the St. Boniface defence setup, were the dikes around St. Boniface hospital and the Lyndale drive area.

**Bolstering Dike**

The Lyndale dike, three-quarters of a mile long and from seven to 10 feet high, was being bolstered by sandbags and earth Sunday as water pounded closer to the top of the barricade.

An urgent appeal for more volunteers was issued Sunday from headquarters at the Norwood community centre. "We need more construction engineers, more men, more bulldozers, large dump trucks and draglines," an official declared.

Right now nine draglines, 15 bulldozers and 125 trucks are being used.

St. Boniface hospital is being

kept dry by nine pumps in operation day and night.

Other St. Boniface dikes still holding are:

1. Between La Verandrye and Messenger streets, along Tache avenue. This barricade gave way previously, but has been repaired.
2. Between La Verandrye and Messenger streets, facing flooded Whittier park.

Army officers, equipped with a walkie-talkie are constantly patrolling the barriers. When a weak spot is found, a message is sent into headquarters and men and equipment are rushed to the area.

**Volunteer Help**

St. Boniface is receiving help from the surrounding countryside. Volunteers from a 50-mile radius are pouring in to reinforce residents of the threatened area who have been going without sleep to build dikes.

A. Bibeau, superintendent of St. Boniface public works department, has warned that if any of the dikes fail "we're finished. The sewers would fill up and we couldn't keep even."

Fernand Viau, M.P. for St. Boni-

## Farmers Press For Assurance Of Financial Aid

Immediate assurance of financial assistance to flooded Manitoba farmers has been requested of Premier D. L. Campbell by the Farmers' Protective association, it was learned Friday.

A spokesman for the group, Harry Bartwell of Culross, said his group is calling on the premier to declare the floods "a state of national emergency."

"Immediate action is imperative and cannot be delayed until the extent of the damage is known," he said. Farmers must be assured necessary supplies of feed, seed, equipment and animals will be available for immediate use when the floods recede, he added.

"Flood conditions," Mr. Bartwell said, "in Manitoba from Winnipeg to Emerson and 20 to 40 miles in width, covering the most fertile land in this province, are certainly as serious, if not more so, than the British Columbia situation of last year."

"Delay in this action will cause postponement of remedial action and farmers in flooded areas will be unable to go about their farming operations when the emergency has passed," he concluded.

## CKRC Crews Win Battle To Keep Station On Air

Engineers and crewmen of radio station CKRC early Sunday morning appeared to have won their battle with the Red river.

Forced off the air at 9 p.m. Saturday when the dike protecting their St. Norbert transmitting station was breached, the station resumed its broadcasts again at 2:50 a.m. Sunday and by 5 a.m. was able to announce that "possibility of another failure due to flood appears remote."

For several days more than a dozen men have battled with sandbags and pumps to save the tuning houses at the base of the tower from being short-circuited by flood waters.

Since Saturday, when St. Mary's road was cut by flood waters the men have been living and working in the building.

Resumption of broadcasting was made possible when CKRC's chief engineer, Bert Hooper, and Wes Fisher of RCA developed a new system for feeding the signal to the tower.

## Propellers Broken, Freighter Drifts

HALIFAX, N.S., May 7 (BUP)—The 600-ton Norwegian freighter Hilvaag wallowed helplessly Saturday among drifting ice floes off Greenland with 36 French Arctic explorers aboard.

The vessel radiated a distress call that "all four propeller blades were broken" when it bumped a huge chunk of ice about 90 miles off the southwest Greenland coast.

An evacuation centre for St. Norbert residents forced out of their homes by flood waters was set up by the Manitoba Red Cross late Saturday.

Officials of the organization announced Sunday that 25 families already were being cared for in the orphanage home in St. Norbert. Another group of evacuees — perhaps as many as 80 — was expected to take shelter there Sunday.

**Supply Food**

The Red Cross is supplying food for the evacuated families. One hundred beds have been supplied by the Canadian army. Cooking facilities already in the building are expected to be adequate. The centre is being run by women evacuees.

**Offers Of Help**

Meanwhile, another flood has hit Winnipeg — this time of offers of help to the Red Cross.

Calls from citizens anxious to assist the organization's effort to shelter and feed evacuees in the Greater Winnipeg area have flooded the switchboard at Red Cross headquarters on Osborne street north.

"I'll do anything," has been the offer of hundreds of citizens.

Volunteer drivers were of tremendous service Saturday. Red Cross officials said. Among their jobs was the moving of 39 evacuees who fled from the Morris flood area. They were transferred from the University of Manitoba, where they were quartered upon their arrival in Winnipeg, to H.M.C.S. Chippawa.

The Red Cross set up seven new canteens Saturday. They are on Glenwood crescent in Elmwood; on Leighton avenue in East Kildonan; on Scotia street in West Kildonan; at the Norwood community club; in the Wildwood area; on Lon-

## Propellers Broken, Freighter Drifts

HALIFAX, N.S., May 7 (BUP)—The 600-ton Norwegian freighter Hilvaag wallowed helplessly Saturday among drifting ice floes off Greenland with 36 French Arctic explorers aboard.

The vessel radiated a distress call that "all four propeller blades were broken" when it bumped a huge chunk of ice about 90 miles off the southwest Greenland coast.

An evacuation centre for St. Norbert residents forced out of their homes by flood waters was set up by the Manitoba Red Cross late Saturday.

Officials of the organization announced Sunday that 25 families already were being cared for in the orphanage home in St. Norbert. Another group of evacuees — perhaps as many as 80 — was expected to take shelter there Sunday.

**Supply Food**

The Red Cross is supplying food for the evacuated families. One hundred beds have been supplied by the Canadian army. Cooking facilities already in the building are expected to be adequate. The centre is being run by women evacuees.

**Offers Of Help**

Meanwhile, another flood has hit Winnipeg — this time of offers of help to the Red Cross.

Calls from citizens anxious to assist the organization's effort to shelter and feed evacuees in the Greater Winnipeg area have flooded the switchboard at Red Cross headquarters on Osborne street north.

"I'll do anything," has been the offer of hundreds of citizens.

Volunteer drivers were of tremendous service Saturday. Red Cross officials said. Among their jobs was the moving of 39 evacuees who fled from the Morris flood area. They were transferred from the University of Manitoba, where they were quartered upon their arrival in Winnipeg, to H.M.C.S. Chippawa.

The Red Cross set up seven new canteens Saturday. They are on Glenwood crescent in Elmwood; on Leighton avenue in East Kildonan; on Scotia street in West Kildonan; at the Norwood community club; in the Wildwood area; on Lon-

## Propellers Broken, Freighter Drifts

HALIFAX, N.S., May 7 (BUP)—The 600-ton Norwegian freighter Hilvaag wallowed helplessly Saturday among drifting ice floes off Greenland with 36 French Arctic explorers aboard.

The vessel radiated a distress call that "all four propeller blades were broken" when it bumped a huge chunk of ice about 90 miles off the southwest Greenland coast.

An evacuation centre for St. Norbert residents forced out of their homes by flood waters was set up by the Manitoba Red Cross late Saturday.

Officials of the organization announced Sunday that 25 families already were being cared for in the orphanage home in St. Norbert. Another group of evacuees — perhaps as many as 80 — was expected to take shelter there Sunday.

**Supply Food**

The Red Cross is supplying food for the evacuated families. One hundred beds have been supplied by the Canadian army. Cooking facilities already in the building are expected to be adequate. The centre is being run by women evacuees.

**Offers Of Help**

Meanwhile, another flood has hit Winnipeg — this time of offers of help to the Red Cross.

Calls from citizens anxious to assist the organization's effort to shelter and feed evacuees in the Greater Winnipeg area have flooded the switchboard at Red Cross headquarters on Osborne street north.

"I'll do anything," has been the offer of hundreds of citizens.

Volunteer drivers were of tremendous service Saturday. Red Cross officials said. Among their jobs was the moving of 39 evacuees who fled from the Morris flood area. They were transferred from the University of Manitoba, where they were quartered upon their arrival in Winnipeg, to H.M.C.S. Chippawa.

The Red Cross set up seven new canteens Saturday. They are on Glenwood crescent in Elmwood; on Leighton avenue in East Kildonan; on Scotia street in West Kildonan; at the Norwood community club; in the Wildwood area; on Lon-

## City Heat, Light In Jeopardy As Power Stations Barricaded

Winnipeggers will continue to get electricity — heat and light — only as long as the city hydro and Winnipeg Electric can keep flood waters out of their distributing stations, officials said Sunday.

The Winnipeg Electric sub-station on Mill street, which supplies electricity for the downtown area and a large portion of the transportation system, can stand another two or three feet of water before the situation gets serious, according to E. V. Caton, chief engineer for the company.

Mr. Caton told the Free Press Sunday that the Winnipeg Electric was sandbagging the interior of the Mill street station, and had ample pumping facilities.

Flood waters north of Prov- encher bridge now extend along Water avenue to the Canadian National railway's bridge; along Notre Dame avenue, east to the bridge; along Lombard street to Victoria avenue, and along McDermott avenue to the railway tracks. From Banna-

face, who has returned from Ottawa, paid tribute to Mr. Bibeau as the man who is "spearing the fight and who is responsible for winning the battle against the Red."

## City Heat, Light In Jeopardy As Power Stations Barricaded

Winnipeggers will continue to get electricity — heat and light — only as long as the city hydro and Winnipeg Electric can keep flood waters out of their distributing stations, officials said Sunday.

The Winnipeg Electric sub-station on Mill street, which supplies electricity for the downtown area and a large portion of the transportation system, can stand another two or three feet of water before the situation gets serious, according to E. V. Caton, chief engineer for the company.

Mr. Caton told the Free Press Sunday that the Winnipeg Electric was sandbagging the interior of the Mill street station, and had ample pumping facilities.

Flood waters north of Prov- encher bridge now extend along Water avenue to the Canadian National railway's bridge; along Notre Dame avenue, east to the bridge; along Lombard street to Victoria avenue, and along McDermott avenue to the railway tracks. From Banna-

## City Heat, Light In Jeopardy As Power Stations Barricaded

Winnipeggers will continue to get electricity — heat and light — only as long as the city hydro and Winnipeg Electric can keep flood waters out of their distributing stations, officials said Sunday.

The Winnipeg Electric sub-station on Mill street, which supplies electricity for the downtown area and a large portion of the transportation system, can stand another two or three feet of water before the situation gets serious, according to E. V. Caton, chief engineer for the company.

Mr. Caton told the Free Press Sunday that the Winnipeg Electric was sandbagging the interior of the Mill street station, and had ample pumping facilities.

Flood waters north of Prov- encher bridge now extend along Water avenue to the Canadian National railway's bridge; along Notre Dame avenue, east to the bridge; along Lombard street to Victoria avenue, and along McDermott avenue to the railway tracks. From Banna-

## City Heat, Light In Jeopardy As Power Stations Barricaded

Winnipeggers will continue to get electricity — heat and light — only as long as the city hydro and Winnipeg Electric can keep flood waters out of their distributing stations, officials said Sunday.

The Winnipeg Electric sub-station on Mill street, which supplies electricity for the downtown area and a large portion of the transportation system, can stand another two or three feet of water before the situation gets serious, according to E. V. Caton, chief engineer for the company.

Mr. Caton told the Free Press Sunday that the Winnipeg Electric was sandbagging the interior of the Mill street station, and had ample pumping facilities.

Flood waters north of Prov- encher bridge now extend along Water avenue to the Canadian National railway's bridge; along Notre Dame avenue, east to the bridge; along Lombard street to Victoria avenue, and along McDermott avenue to the railway tracks. From Banna-

## City Heat, Light In Jeopardy As Power Stations Barricaded

Winnipeggers will continue to get electricity — heat and light — only as long as the city hydro and Winnipeg Electric can keep flood waters out of their distributing stations, officials said Sunday.

The Winnipeg Electric sub-station on Mill street, which supplies electricity for the downtown area and a large portion of the transportation system, can stand another two or three feet of water before the situation gets serious, according to E. V. Caton, chief engineer for the company.

Mr. Caton told the Free Press Sunday that the Winnipeg Electric was sandbagging the interior of the Mill street station, and had ample pumping facilities.

Flood waters north of Prov- encher bridge now extend along Water avenue to the Canadian National railway's bridge; along Notre Dame avenue, east to the bridge; along Lombard street to Victoria avenue, and along McDermott avenue to the railway tracks. From Banna-

## City Heat, Light In Jeopardy As Power Stations Barricaded

Winnipeggers will continue to get electricity — heat and light — only as long as the city hydro and Winnipeg Electric can keep flood waters out of their distributing stations, officials said Sunday.

The Winnipeg Electric sub-station on Mill street, which supplies electricity for the downtown area and a large portion of the transportation system, can stand another two or three feet of water before the situation gets serious, according to E. V. Caton, chief engineer for the company.

Mr. Caton told the Free Press Sunday that the Winnipeg Electric was sandbagging the interior of the Mill street station, and had ample pumping facilities.

Flood waters north of Prov- encher bridge now extend along Water avenue to the Canadian National railway's bridge; along Notre Dame avenue, east to the bridge; along Lombard street to Victoria avenue, and along McDermott avenue to the railway tracks. From Banna-

## Transportation Cut By Highway Washouts

PORT FRANCES, Ont., May 7 (CP) — Provincial highway 70 has been washed out at two places north of Elmo, Ont., severing transportation between Port Frances and Kenora.

La Vallee, 11 miles west of here, Saturday was still isolated. The La Vallee river, which flooded the village last week, rose again Friday night and cut off all roads. Communications between the town and Port Frances have been cut.

Highway 70 is the main road through the Rainy River district.

## Transportation Cut By Highway Washouts

PORT FRANCES, Ont., May 7 (CP) — Provincial highway 70 has been washed out at two places north of Elmo, Ont., severing transportation between Port Frances and Kenora.

La Vallee, 11 miles west of here, Saturday was still isolated. The La Vallee river, which flooded the village last week, rose again Friday night and cut off all roads. Communications between the town and Port Frances have been cut.

Highway 70 is the main road through the Rainy River district.

## Transportation Cut By Highway Washouts

PORT FRANCES, Ont., May 7 (CP) — Provincial highway 70 has been washed out at two places north of Elmo, Ont., severing transportation between Port Frances and Kenora.

La Vallee, 11 miles west of here, Saturday was still isolated. The La Vallee river, which flooded the village last week, rose again Friday night and cut off all roads. Communications between the town and Port Frances have been cut.

Highway 70 is the main road through the Rainy River district.

## Transportation Cut By Highway Washouts

PORT FRANCES, Ont., May 7 (CP) — Provincial highway 70 has been washed out at two places north of Elmo, Ont., severing transportation between Port Frances and Kenora.

La Vallee, 11 miles west of here, Saturday was still isolated. The La Vallee river, which flooded the village last week, rose again Friday night and cut off all roads. Communications between the town and Port Frances have been cut.

Highway 70 is the main road through the Rainy River district.

## Transportation Cut By Highway Washouts

PORT FRANCES, Ont., May 7 (CP) — Provincial highway 70 has been washed out at two places north of Elmo, Ont., severing transportation between Port Frances and Kenora.

La Vallee, 11 miles west of here, Saturday was still isolated. The La Vallee river, which flooded the village last week, rose again Friday night and cut off all roads. Communications between the town and Port Frances have been cut.

Highway 70 is the main road through the Rainy River district.

## Transportation Cut By Highway Washouts

PORT FRANCES, Ont., May 7 (CP) — Provincial highway 70 has been washed out at two places north of Elmo, Ont., severing transportation between Port Frances and Kenora.

La Vallee, 11 miles west of here, Saturday was still isolated. The La Vallee river, which flooded the village last week, rose again Friday night and cut off all roads. Communications between the town and Port Frances have been cut.

Highway 70 is the main road through the Rainy River district.

## Transportation Cut By Highway Washouts

PORT FRANCES, Ont., May 7 (CP) — Provincial highway 70 has been washed out at two places north of Elmo, Ont., severing transportation between Port Frances and Kenora.

La Vallee, 11 miles west of here, Saturday was still isolated. The La Vallee river, which flooded the village last week, rose again Friday night and cut off all roads. Communications between the town and Port Frances have been cut.

Highway 70 is the main road through the Rainy River district.

## 125 Morris Evacuees At 'U' Now Without Heat, Lights

The university of Manitoba, Port Garry was reported Sunday to be without light, heat or phone service.

Efforts to get an emergency overhead power line through were being made, it was announced by F. W. Crawford, university controller.

The line is needed by some 125 Morris flood victims who have taken refuge in the student residence. The building was vacated hurriedly by students who finished writing examinations at the end of the week. Flood victims began to arrive at the residence at the beginning of the week, and a large group was taken in Friday. The building was reported filled to capacity Sunday.

President A. H. S. Gillson

## 125 Morris Evacuees At 'U' Now Without Heat, Lights

The university of Manitoba, Port Garry was reported Sunday to be without light, heat or phone service.

Efforts to get an emergency overhead power line through were being made, it was announced by F. W. Crawford, university controller.

The line is needed by some 125 Morris flood victims who have taken refuge in the student residence. The building was vacated hurriedly by students who finished writing examinations at the end of the week. Flood victims began to arrive at the residence at the beginning of the week, and a large group was taken in Friday. The building was reported filled to capacity Sunday.

President A. H. S. Gillson

## 125 Morris Evacuees At 'U' Now Without Heat, Lights

The university of Manitoba, Port Garry was reported Sunday to be without light, heat or phone service.

Efforts to get an emergency overhead power line through were being made, it was announced by F. W. Crawford, university controller.

The line is needed by some 125 Morris flood victims who have taken refuge in the student residence. The building was vacated hurriedly by students who finished writing examinations at the end of the week. Flood victims began to arrive at the residence at the beginning of the week, and a large group was taken in Friday. The building was reported filled to capacity Sunday.

President A. H. S. Gillson

## 125 Morris Evacuees At 'U' Now Without Heat, Lights

The university of Manitoba, Port Garry was reported Sunday to be without light, heat or phone service.

Efforts to get an emergency overhead power line through were being made, it was announced by F. W. Crawford, university controller.

The line is needed by some 125 Morris flood victims who have taken refuge in the student residence. The building was vacated hurriedly by students who finished writing examinations at the end of the week. Flood victims began to arrive at the residence at the beginning of the week, and a large group was taken in Friday. The building was reported filled to capacity Sunday.

President A. H. S. Gillson

## 125 Morris Evacuees At 'U' Now Without Heat, Lights

The university of Manitoba, Port Garry was reported Sunday to be without light, heat or phone service.

Efforts to get an emergency overhead power line through were being made, it was announced by F. W. Crawford, university controller.

The line is needed by some 125 Morris flood victims who have taken refuge in the student residence. The building was vacated hurriedly by students who finished writing examinations at the end of the week. Flood victims began to arrive at the residence at the beginning of the week, and a large group was taken in Friday. The building was reported filled to capacity Sunday.

President A. H. S. Gillson

## 125 Morris Evacuees At 'U' Now Without Heat, Lights

The university of Manitoba, Port Garry was reported Sunday to be without light, heat or phone service.

Efforts to get an emergency overhead power line through were being made, it was announced by F. W. Crawford, university controller.

The line is needed by some 125 Morris flood victims who have taken refuge in the student residence. The building was vacated hurriedly by students who finished writing examinations at the end of the week. Flood victims began to arrive at the residence at the beginning of the week, and a large group was taken in Friday. The building was reported filled to capacity Sunday.

President A. H. S. Gillson

## 125 Morris Evacuees At 'U' Now Without Heat, Lights

The university of Manitoba, Port Garry was reported Sunday to be without light, heat or phone service.

Efforts to get an emergency overhead power line through were being made, it was announced by F. W. Crawford, university controller.

The line is needed by some 125 Morris flood victims who have taken refuge in the student residence. The building was vacated hurriedly by students who finished writing examinations at the end of the week. Flood victims began to arrive at the residence at the beginning of the week, and a large group was taken in Friday. The building was reported filled to capacity Sunday.

President A. H. S. Gillson

## Busy Flood H.Q. Activity Like War Command Post

Flood operations headquarters at the provincial legislative building are like a wartime command post. Walls are hung with maps marking the water's hourly advance and spotting concentrations of military relief workers. There is a steady hum of wireless messages from sector commanders and telephone calls offering additional aid.

**24-Hour Basis**

The operations room is working on a 24-hour basis, with personnel rotating in three shifts. Brig. R. E. A. Morton, general officer commanding the prairie army command, is director of operations, assisted by Brig. J. W. Bruce and

liaison officers from the R.C.A.F. and R.C.N.

Working on the flood scene are squads of 30 men each equipped with portable wireless sets for constant communication with headquarters. District liaison officers for each municipality transmit information on supply requirements and new developments.

Liaison officers include: Lt. Cmdr. H. P. Penfold, R.C.N.; F.L. D. F. McEwan, R.C.A.F.; Capt. D. Baxter, Fort Garry; Capt. W. Blaine, St. Vital; Capt. R. Porter, Riverview; Capt. R. Pirlotte, St. Boniface-Norwood; Lieut. F. McNaughton, Scotia street; Capt. D. Gunter, East Kildonan.

During Saturday night, two work parties from the Royal Canadian Horse artillery worked at St. Boniface until midnight, when they were relieved by two R.C.A.F. work parties. Several navy pumping squads have also been on duty.

In East Kildonan, three naval work parties were on the scene from 8 p.m. to 8 a.m., when they were relieved by a party from the R.C.H.A.

## East Kildonan Calls

Mayor J. L. Bodie of East Kildonan Sunday asked that all urgent flood relief calls for the district be placed on the East Kildonan headquarters phone at 504 846. Mayor Bodie's home telephone has been swamped with calls, thus blocking the line for out-calls.

## East Kildonan Calls

Mayor J. L. Bodie of East Kildonan Sunday asked that all urgent flood relief calls for the district be placed on the East Kildonan headquarters phone at 504 846. Mayor Bodie's home telephone has been swamped with calls, thus blocking the line for out-calls.

## 'Dry Creek' Now A Lake

A dike hastily thrown up late Saturday night on Seven Oaks avenue just east of Main street, in West Kildonan, constituted the brightest spot on that municipality's otherwise dismal flood picture early Sunday.

Seven homes in that area have been saved from complete inundation through the efforts of residents, volunteers and navy personnel, according to P. H. Brown, municipal police chief.

The four boats used for evacuation purposes "were quiet Saturday night," said Chief Brown. Close to 200 persons have already been evacuated from their homes.

He predicted more families would have to be moved Sunday.

"We have made arrangements for emergency shelters but have not had to use them yet," stated Chief Brown.

A ravine running south from Kildonan park and about 100 yards wide, cuts perpendicularly through about eight avenues. This "dry creek," residents call it, has become a lake and is at least 15 feet deep in some places.

This widening lake isolates nearly 500 lots. Boats plying back and forth give residents east of the flooded areas their only link with the mainland.

One Royal avenue resident, fighting desperately to strengthen a dike around his home, told the Free Press Sunday: "We had an army of assistance; but how can you fight anything like this flood?"

"We are glad to keep fighting as long as there's a chance. . . I don't know whether we'll be able to hold on much longer."

## 'Dry Creek' Now A Lake

A dike hastily thrown up late Saturday night on Seven Oaks avenue just east of Main street, in West Kildonan, constituted the brightest spot on that municipality's otherwise dismal flood picture early Sunday.

Seven homes in that area have been saved from complete inundation through the efforts of residents, volunteers and navy personnel, according to P. H. Brown, municipal police chief.

The four boats used for evacuation purposes "were quiet Saturday night," said Chief Brown. Close to 200 persons have already been evacuated from their homes.

He predicted more families would have to be moved Sunday.

"We have made arrangements for emergency shelters but have not had to use them yet," stated Chief Brown.

A ravine running south from Kildonan park and about 100 yards wide, cuts perpendicularly through about eight avenues. This "dry creek," residents call it, has become a lake and is at least 15 feet deep in some places.

This widening lake isolates nearly 500 lots. Boats plying back and forth give residents east of the flooded areas their only link with the mainland.

One Royal avenue resident, fighting desperately to strengthen a dike around his home, told the Free Press Sunday: "We had an army of assistance; but how can you fight anything like this flood?"

"We are glad to keep fighting as long as there's a chance. . . I don't know whether we'll be able to hold on much longer."

## Red Cross Gives Refuge To St. Norbert Victims

An evacuation centre for St. Norbert residents forced out of their homes by flood waters was set up by the Manitoba Red Cross late Saturday.

Officials of the organization announced Sunday that 25 families already were being cared for in the orphanage home in St. Norbert. Another group of evacuees — perhaps as many as 80 — was expected to take shelter there Sunday.

**Supply Food**

The Red Cross is supplying food for the evacuated families. One hundred beds have been supplied by the Canadian army. Cooking facilities already in the building are expected to be adequate. The centre is being run by women evacuees.

**Offers Of Help**

Meanwhile, another flood has hit Winnipeg — this time of offers of help to the Red Cross.

Calls from citizens anxious to assist the organization's effort to shelter and feed evacuees in the Greater Winnipeg area have flooded the switchboard at Red Cross headquarters on Osborne street north.

"I'll do anything," has been the offer of hundreds of citizens.

Volunteer drivers were of tremendous service Saturday. Red Cross officials said. Among their jobs was the moving of 39 evacuees who fled from the Morris flood area. They were transferred from the University of Manitoba, where they were quartered upon their arrival in Winnipeg, to H.M.C.S. Chippawa.

The Red Cross set up seven new canteens Saturday. They are on Glenwood crescent in Elmwood; on Leighton avenue in East Kildonan; on Scotia street in West Kildonan; at the Norwood community club; in the Wildwood area; on Lon-

## Red Cross Gives Refuge To St. Norbert Victims

An evacuation centre for St. Norbert residents forced out of their homes by flood waters was set up by the Manitoba Red Cross late Saturday.

Officials of the organization announced Sunday that 25 families already were being cared for in the orphanage home in St. Norbert. Another group of evacuees — perhaps as many as 80 — was expected to take shelter there Sunday.

**Supply Food**

The Red Cross is supplying food for the evacuated families. One hundred beds have been supplied by the Canadian army. Cooking facilities already in the building are expected to be adequate. The centre is being run by women evacuees.

**Offers Of Help**

Meanwhile, another flood has hit Winnipeg — this time of offers of help to the Red Cross.

Calls from citizens anxious to assist the organization's effort to shelter and feed evacuees in the Greater Winnipeg area have flooded the switchboard at Red Cross headquarters on Osborne street north.

"I'll do anything," has been the offer of hundreds of citizens.

Volunteer drivers were of tremendous service Saturday. Red Cross officials said. Among their jobs was the moving of 39 evacuees who fled from the Morris flood area. They were transferred from the University of Manitoba, where they were quartered upon their arrival in Winnipeg, to H.M.C.S. Chippawa.

The Red Cross set up seven new canteens Saturday. They are on Glenwood crescent in Elmwood; on Leighton avenue in East Kildonan; on Scotia street in West Kildonan; at the Norwood community club; in the Wildwood area; on Lon-

## Millions Of Tons: Maybank \$350,000